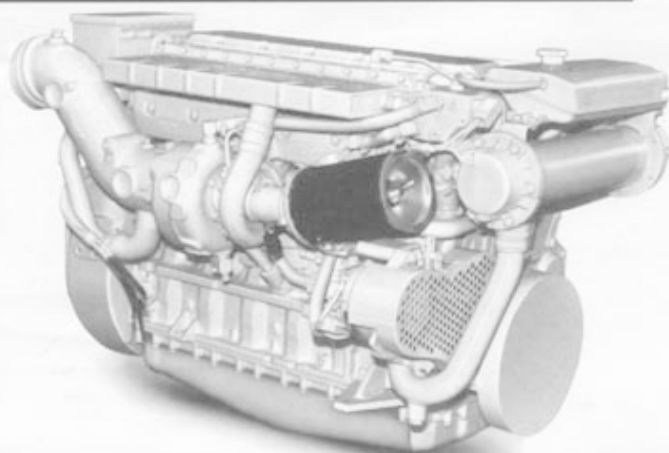


CATERPILLAR®

Marine Engine

3116

205-350 hp
2400-2800 rpm



Shown with Accessory Equipment

SPECIFICATIONS

In-Line 6, 4-Stroke-Cycle-Diesel	
Bore—mm (in)	105 (4.13)
Stroke—mm (in)	127 (5.0)
Displacement—L (cu in)	6.6 (402)
Rotation (from flywheel end)	Counterclockwise
Compression Ratio	16:1
Capacity for Liquids — L (U.S. gal)	
Cooling System	28.0 (7.4)
Lube Oil System (refill)	25.0 (6.6)
Oil Change Interval	250 hrs
Engine Weight, Net Dry (approx)—kg (lb)	
Turbocharged-Aftercooled (TA)	681 (1,500)

PERFORMANCE DATA*

Turbocharged-Aftercooled

Rating Level	E	D	C	B	A
Rated rpm	2800	2600	2600	2400	2400
Engine Power @ rpm	224 kW (300 bhp)** 305 mhp	205 kW (275 bhp)** 279 mhp	190 kW (255 bhp)** 258 mhp	153 kW (205 bhp)** 208 mhp	153 kW (205 bhp)** 208 mhp

rpm	2800	2400	2000	2600	2200	1800	2600	2200	1800	2400	2000	1600	2400	2000	1600
kW	224	141	82	205	125	70	190	116	65	153	89	46	153	89	45
g/kW-hr	225	215	221	217	219	223	219	218	225	214	220	233	214	220	233
L/hr	60.2	36.1	21.6	53.0	32.6	18.6	49.6	30.2	17.4	39.0	23.2	12.6	39.0	23.2	12.6

bhp	300	189	109	275	168	94	255	156	87	205	119	61	205	119	61
lb/hp-hr	.370	.353	.363	.357	.380	.367	.360	.358	.370	.352	.362	.383	.352	.362	.383
gal/hr	15.9	9.5	5.7	14.0	8.6	4.9	13.1	8.0	4.6	10.3	6.1	3.3	10.3	6.1	3.3

Turbocharged-Aftercooled

Rating Level	E	D	C	B	A
Rated rpm	2800	2600	2600	2400	2400
Engine Power @ rpm	261 kW (350 bhp)** 355 mhp	231 kW (310 bhp)** 314 mhp	209 kW (280 bhp)** 284 mhp	172 kW (230 bhp)** 234 mhp	172 kW (230 bhp)** 234 mhp

rpm	2800	2400	2000	2600	2200	1800	2600	2200	1800	2400	2000	1600	2400	2000	1600
kW	261	165	97	231	140	80	209	120	73	172	98	54	172	98	54
g/kW-hr	239	218	227	234	229	232	231	229	233	220	230	226	220	230	226
L/hr	74.3	42.7	25.8	64.4	38.1	21.2	57.4	34.6	19.3	45.0	27.2	13.7	45.0	27.2	13.7

bhp	350	221	130	310	188	107	280	161	98	230	131	72	230	131	72
lb/hp-hr	.393	.358	.373	.385	.376	.381	.380	.376	.383	.362	.378	.372	.362	.378	.372
gal/hr	19.6	11.3	6.8	12.0	10.1	5.6	15.2	9.1	5.1	11.9	7.2	3.6	11.9	7.2	3.6

* Represents performance along a typical fixed pitch propeller curve.

** Power rated in accordance with NMMA procedure as crankshaft power. For units equipped with Caterpillar-supplied marine gears, reduce crankshaft power by 3% for propeller shaft power.

RATING LEVEL DEFINITIONS

E — For use in pleasure craft with planing hulls, as well as for patrol, pilot and harbor master boats.

D — For use in patrol, customs, police and some fire boats.

B — For use in midwater trawlers, purse seiners, crew and supply boats, ferry boats with trips longer than one hour, and towboats in rivers where locks, sandbars, curves, or traffic dictate frequent slowing.

C – For use in yachts with displacement hulls, as well as ferries with trips less than one hour, fish boats with higher speed journey out and back (e.g., some lobster, crayfish, and tuna), and short trip coastal freighters.

A – For use with little load cycling in oceangoing displacement hulls such as freighters, tugboats, and bottom-drag trawlers, and deep river towboats.